

Eluting Position Controllable Flash Chromatography System

Smart Flash **AKROS**



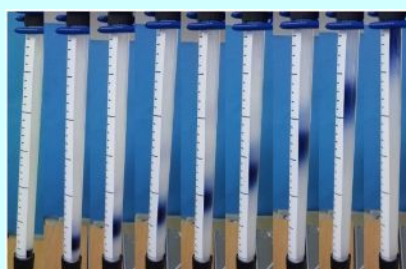
AKROS Integrated with TLC Image Reader Achieves;

- ◆ Resolution: 50% and Up
- ◆ Sample Eluting Time: 50% Shorter
- ◆ Solvent Usage: 1/3 of Others

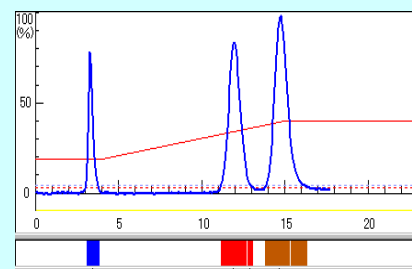
Streamlined from TLC Scanning to Sample Run



Scan TLC.



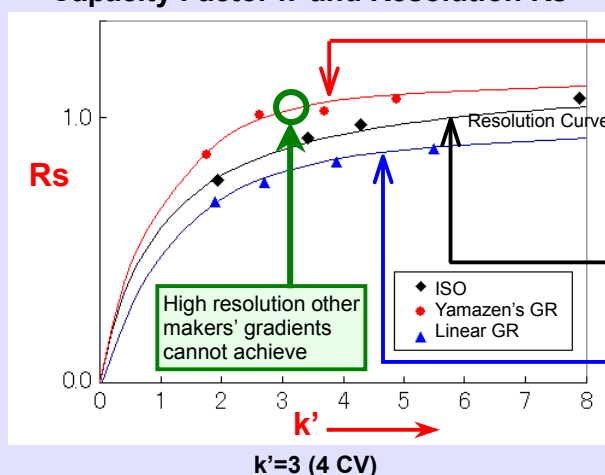
Chromatography run on Rf Gradient that controls eluting position of the target compound.



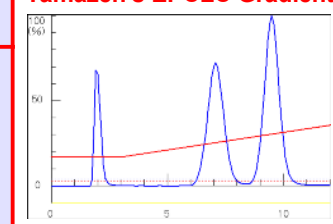
Perfect sample separation at 4 CV position

The Highest Resolution In Sample Purification Achieved from the TLC Scanning

Capacity Factor k' and Resolution R_s



Yamazen's EPCLC Gradient



Isocratic

Ordinary Linear Gradient

System Specifications

Controller	Laptop or Desktop
Application software	<ul style="list-style-type: none"> ● Eluting position controllable "Rf Gradient" Method ● 4-column volume elution of the target compound minimizes solvent use and waste disposal. Cost is drastically saved and It's Eco-friendly! ● Changes method parameters on the fly. ● Scale up – Transfer method from one size column to another.
Slow gradient to apply for high polar solvents	Slow gradient of 1-7% is possible.
Pumping system, Model No.580S	0-80ml/min, 1.0Mpa (145psi)
Fixed wavelength UV detector, Model prepUV-254	254nm
Variable wavelength UV detector, Model prepUV-10V	190-380nm
UV-VIS detector, Model prepUV/VIS-10V	190-600nm
Fraction collector, Model FR-360	A pair of the rack, X-Y driven, fraction modes of Time, Peak, Peak & Slope & Manual Collect
TLC Image Reader	254nm lamp Streamlined from a TLC scanning to a sample run
Floor space (W x D x H) H = height of column stand	50 x 45 x 78cm (19.7x 17.7 x 30.7 inch)
Certifications	JIS and CE
Options	Solvent & waste level monitor, Column air purge

Specifications of test tube racks

When ordering the rack please specify the Cat. Number.

Racks for U.S. standard test tube sizes				Racks for Japanese standard test tube sizes			
Cat No.	Pin Code	Fraction Volume (Default)	Test Tube Sizes (mm)	Cat No.	Pin Code	Fraction Volume (Default)	Test Tube Sizes (mm)
AI13100	A	7ml	13x100x75 pieces	AI15150	A	15ml	15x150x75 pieces
AI15125	A	12ml	15x125x75 pieces	AI18180	B	30ml	18x180x75 pieces
AI16125	A	15ml	16x125x75 pieces	AI24180	C	60ml	24x180x30 pieces
AI16150	A	16ml	16x150x75 pieces	AI30180	D	90ml	30x180x27 pieces
AI18150	B	22ml	18x150x75 pieces	AI30200	D	100ml	30x200x27 pieces
AI25150	C	45ml	25x150x30 pieces	AI60180	E	350ml	60x180x10 pieces
AI25200	C	56ml	25x200x30 pieces				

System specifications are subject to change without notice.



YAMAZEN CORPORATION

HEAD OFFICE RECRUIT SHIN-OSAKA BLDG. 3F, 5-14-22 NISHINAKAJIMA,
YODOGAWA-KU, OSAKA 532-0011, JAPAN
TEL: +81-6-6304-5839 FAX: +81-6-6304-3681
R & D TEL: +81-6-6304-7284 FAX: +81-6-6304-7283
TOKYO OFFICE TEL: +81-3-5256-6481 FAX: +81-3-5256-6480
E-MAIL: info@yamazenc.co.jp WEB SITE: www.yamazenc.co.jp

Distributor :