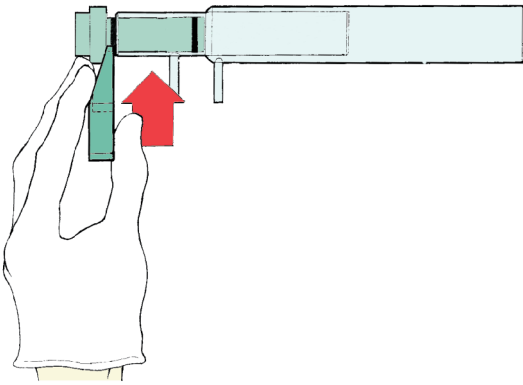


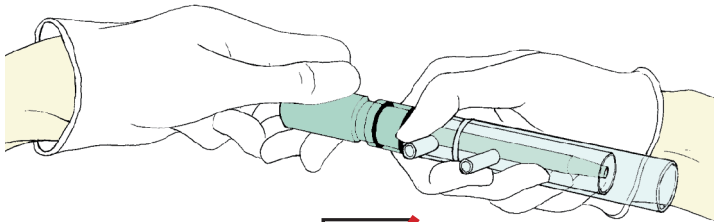
Disassembling Semi Demountable Torches



Step 1

Place the SDT extractor tool between the quartz and the adaptor. Gently lever back and forth pushing carefully towards the thickest part of the tool. This will loosen the adaptor enough to be extracted by hand.

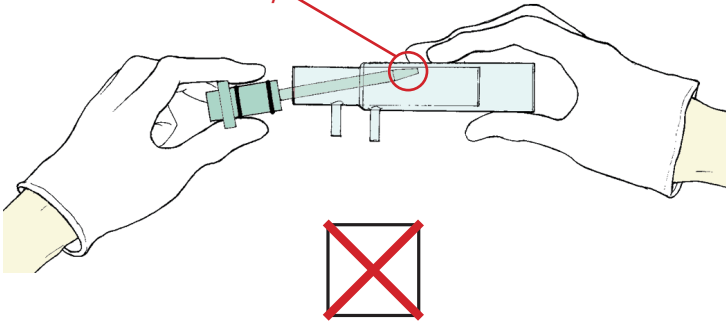
Caution: Always ensure quartz has cooled sufficiently before handling as it remains extremely hot for minutes after being removed from plasma. During handling of this brittle material, it is advised cotton gloves be worn to protect both your hands and the quartz alike.



Step 2

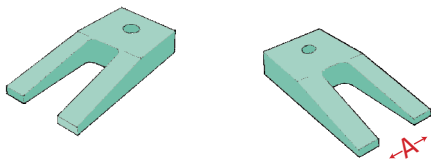
When extracting the adaptor by hand, try to keep the aerosol tube parallel to the inside wall of the torch. This will avoid damaging the torch and aerosol tube by preventing collision with the torch body.

Collision of aerosol tube and torch body.



It is best to extract the aerosol tube in a controlled manner. A recommended method is to support your elbows on a bench area and rotate the adaptor as it is removed. This will prevent a sudden release of the tube, which is where you are most likely to damage the torch or aerosol tube.

SDT Extractor Tool



SDT Extractor Tool

Part Number	A
31-100-0109	12.2mm
31-100-0106	14.2mm
31-100-0105	15.2mm



Head Office (Australia)
15 Batman Street
West Melbourne VIC 3003
Australia
A.B.N. 35 006 560 032

Telephone: +61 3 9320 1111
Toll Free (Aust): 1800 777 638
Facsimile: +61 3 9320 1112
Email: enquiries@geicp.com
www.geicp.com

USA Office
4 Barlows Landing Road
Unit #2
Pocasset, MA 02559
USA

Telephone: 508 563 1800
Toll Free: 800 208 0097
Facsimile: 508 563 1802
Email: geusa@geicp.com